



# GAT MONTHLY MEMBERSHIP PROGRESS REPORT

Results as of: 3/31/2024

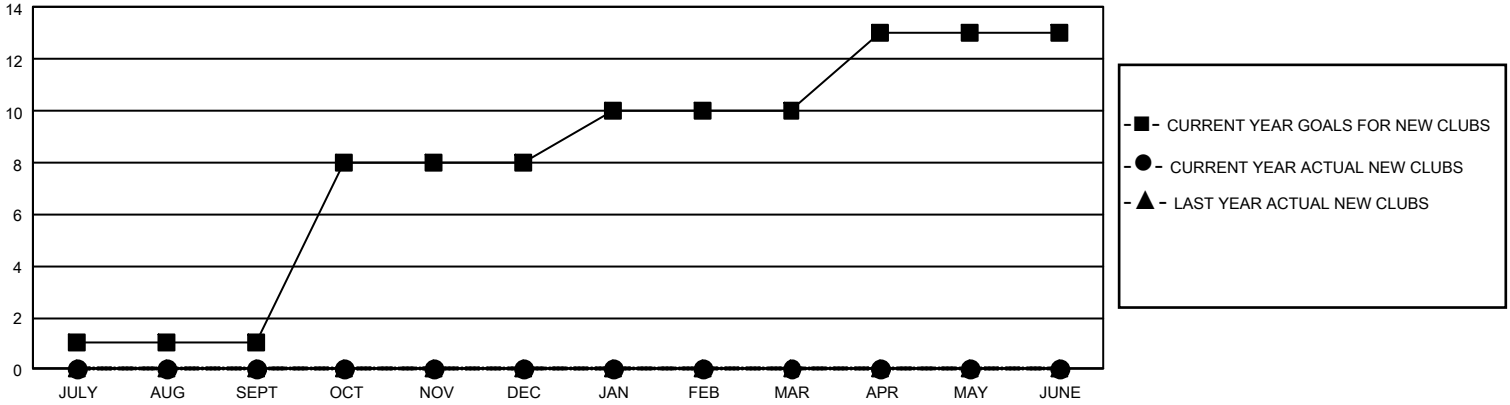
## GMT Constitutional Area 4, Group B

REPORT DOES NOT INCLUDE CLUBS IN UNDISTRICTED AREAS.

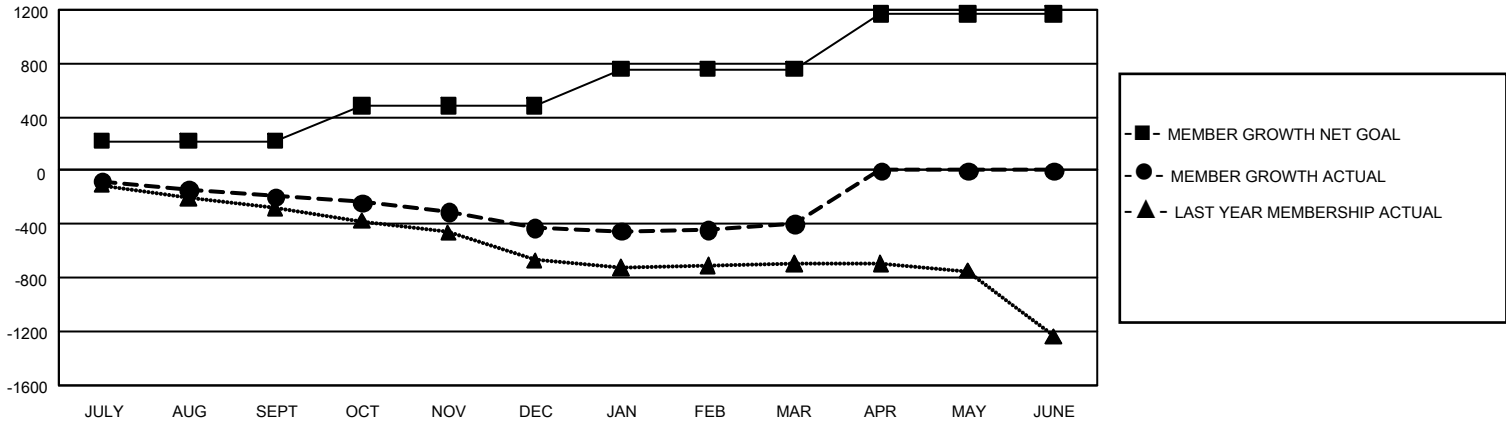
Clubs			
RESULTS FOR 2023-2024			
QUARTER	NEW CLUB GOAL	NEW CLUBS	DROPPED CLUBS
JULY/AUG/SEPT	3	0	8
OCT/NOV/DEC	21	0	10
JAN/FEB/MAR	6	0	4
APR/MAY/JUNE	9	0	0

Members			
RESULTS FOR 2023-2024			
QUARTER	MEMBER GROWTH NET GOAL	MEMBER GROWTH ACTUAL	DROPPED MEMBERS ACTUAL (including transfers)
JULY/AUG/SEPT	221	295	422
OCT/NOV/DEC	261	340	549
JAN/FEB/MAR	278	470	398
APR/MAY/JUNE	412	0	0

GOALS AND ACTUAL NEW CLUBS CUMULATIVE



GOALS AND ACTUAL MEMBERS CUMULATIVE



<b>DROPPED CLUBS: 22</b>	453 CLUBS OF 930 ADDED 1 OR MORE NEW MEMBERS	<b>GENDER DISTRIBUTION</b>	
		MALE 15,153 (77.56%) FEMALE 4,384 (22.44%) NON BINARY 0 (0.00%) PREFER NOT TO ANSWER 0 (0.00%)	
<b>DROPPED MEMBERS</b>		<a href="#">CLICK HERE FOR CUMULATIVE MEMBERSHIP DATA</a>	TOTAL FAMILY UNIT MEMBERS 933
DECEASED 127 CLUB CANCELLED 26 OTHER 1,216 <b>TOTAL 1,369</b>	FAMILY MEMBERS PAYING HALF DUES 459		